



Tork® Electric Timers Exclusively for HVAC Wholesale



TORK®

© 2010 Invensys. All Rights Reserved.

The names, logos, and taglines identifying the products and services of Invensys are proprietary marks of Invensys or its subsidiaries. All third party trademarks and service marks are the proprietary marks of their respective owners.

i n v e n s y s
Controls

Agenda

- Background
- Applications & Technical Concepts
- Product Line & Features
- Competition
- Sales Materials
- Contact Information
- Q&A



Applications for Electric Timers

- Business Remodel
- Business Merger
- Grocery Markets
- Small Delicatessens
- Liquor Stores
- Convenience Stores
- Irrigation Systems
- Recorded Messages
- Storage Companies
- Interior Lighting
- Electrical Motors
- HVAC Equipment
- Parking Lot Lighting
- Billboard Lighting
- Process Equipment
- Livestock Cooling Systems

Paragon® Cross Reference

Paragon Item Number	Tork® Part Number	Description
4001-00	1101	24 Hr Electromech Timer - SPST - 120V - 40 Amps - Metal Encl
4002-71	1102	24 Hr Electromech Timer - SPST - 208-277V - 40 Amps - Metal Encl
4003-00	1103	24 Hr Electromech Timer - DPST - 120V - 40 Amps - Metal Encl
4004-71	1104	24 Hr Electromech Timer - DPST - 208-277V - 40 Amps - Metal Encl
42011-00	TU40	Universal Multi-Voltage 24 Hr Electromech Timer
42013-00	TU40	Universal Multi-Voltage 24 Hr Electromech Timer
42013-20	TU40	Universal Multi-Voltage 24 Hr Electromech Timer
44005-00	TU40	Universal Multi-Voltage 24 Hr Electromech Timer
EC4000/120V	E120B	24 Hr Electronic Timer - SPDT - 120-208-277V - 40 Amps - Plastic Encl
EC4000PC/120V	E120B	24 Hr Electronic Timer - SPDT - 120-208-277V - 40 Amps - Plastic Encl
EC4004/120V	E101B	24 Hr Electronic Timer - SPST - 120-208-277V - 40 Amps - Plastic Encl
EC4004/208-277V	E101B	24 Hr Electronic Timer - SPST - 120-208-277V - 40 Amps - Plastic Encl
EC4004PC/120V-RT	E101B	24 Hr Electronic Timer - SPST - 120-208-277V - 40 Amps - Plastic Encl

Paragon® Cross Reference

Paragon Item Number	Tork® Part Number	Description
P101-00	TU40	Universal Multi-Voltage 24 Hr Electromech Timer
P101-00M	TU40	Universal Multi-Voltage 24 Hr Electromech Timer
P101-00P	TU40	Universal Multi-Voltage 24 Hr Electromech Timer
P101-00PC-RT	TU40	Universal Multi-Voltage 24 Hr Electromech Timer
P103-00	TU40	Universal Multi-Voltage 24 Hr Electromech Timer
P103-00M	TU40	Universal Multi-Voltage 24 Hr Electromech Timer
P103-00P	TU40	Universal Multi-Voltage 24 Hr Electromech Timer
P103-00PC-RT	TU40	Universal Multi-Voltage 24 Hr Electromech Timer
P104-71	TU40	Universal Multi-Voltage 24 Hr Electromech Timer
P104-71M	TU40	Universal Multi-Voltage 24 Hr Electromech Timer
P104-71P	TU40	Universal Multi-Voltage 24 Hr Electromech Timer
P104-71PC-RT	TU40	Universal Multi-Voltage 24 Hr Electromech Timer
P104-71RT	TU40	Universal Multi-Voltage 24 Hr Electromech Timer
TRIPPERS FOR 1100 Series	P47	Extra Trippers for 1100 Series Timers

Paragon® Cross Reference

Paragon Item Number	Tork® Part Number	Description
7007-00	W200	7 Day Electromech Timer - DPST - 120V - 40 Amps - Metal Encl
7008-00	W220	7 Day Electromech Timer - DPDT - 120V - 40 Amps - Metal Encl
7008-71	W222	7 Day Electromech Timer - DPDT - 208-277V - 40 Amps - Metal Encl
EC7000PC/120V-RT	EW120B	7 Day Electronic Timer - SPDT - 120-208-277V - 40 Amps - Plastic Encl
EC7001/208-277V	EW120B	7 Day Electronic Timer - SPDT - 120-208-277V - 40 Amps - Plastic Encl

Timer Categories

- 24 Hour Timers
 - 1100 Series Electromechanical
 - TU40 Multi-voltage
 - E100B Electronic Multi-voltage

- 7 Day Timers
 - W Series Electromechanical
 - EW Series Electronic Multi-voltage



Tork® Timers



1101
1102
1103
1104
P47



TU40



E101B
E120B



W200
W220
W222
P69



EW120B

1100 Series

- 24 Hour Clock Dial
- 20 Min ON Min Setting
- 75 Min OFF Min Setting
- Manual Override
- 12 Max ON/OFF Events per day
- Switch Types SPST and DPST
- 40 AMP Rating



TU40

- Multi-Voltage Input
 - Automatic Detection
- 24 Hour Real Time Clock Face
- Minimum setting 15 Minutes
- Captive trippers
- 4 in 1 DPDT contacts
 - Include SPST, SPDT, DPST
- Load ON Red LED Indicator
- Power on Green LED Indicator
- ON/OFF/AUTO Switch



E100B Series

- Multi-Voltage Input
 - 24/120/208/240/277
- 20 ON/OFF Operations
- Manual Override
- SPST DPST SPDT Load Contacts
- 30A Output Contact
- 100 hour SuperCapacitor Back-Up



W Series

- 7 Day Clock Dial
- 60 Min ON Minimum
- 120 Min OFF Minimum
- Manual Override
- 2 Max ON/OFF Events Per Day
- SPST, SPDT, DPST, 3PST, 4PST
- 40 Amp Rating



EW Series

- Multi-Voltage Input
 - 24/120/208/240/277
- 20 ON/OFF Operations
- 7 Day Scheduling
- Manual Override
- SPST DPST SPDT Load Contacts
- 30A Output Contact
- 100 hour SuperCapacitor Back-Up





Poll Question #1

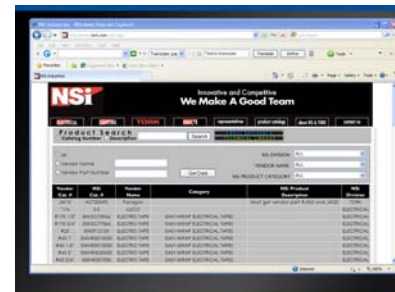
- Which of the following timers are **7-Day** electromechanical timers?
 - A. 1101 and 1104
 - B. TU40
 - C. E101B and E120B
 - D. W222 and EW120B

Manufacturers of Electric Timers

- Intermatic
 - Grasslin Timers
- Tork
 - Purchased by NSi Industries
- Others
 - Myriad of small players



<http://www.tork.com/xref.aspx>



Tork® Did You Know Available

HVACSource™

Fall 2010, Volume 27



Did you know?

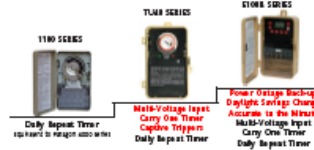
Tork® Timers are now being distributed to HVAC wholesalers exclusively through Invensys Controls.

Invensys Controls is proud to offer Tork Timers for all of your time control needs. Use this handy reference to quickly choose your timer based on application and requirements.

24 Hour Timers

From the basic 1100 Series to the full-featured E100B Series, these timers provide great performance you can depend on.

The TU40 Series - is the universal model you'll need for almost any job.



Seven Day Timers

Now you can offer customers the base W Series or feature-rich EW Series. For your convenience, part order numbers are listed below.



1101	24 Hour Electromechanical Timer, SPST, 120V, 40 amps, Metal Enclosure
1102	24 Hour Electromechanical Timer, SPST, 208-277V, 40 amps, Metal Enclosure
1103	24 Hour Electromechanical Timer, DPST, 120V, 40 amps, Metal Enclosure
1104	24 Hour Electromechanical Timer, DPST, 208-277V, 40 amps, Metal Enclosure
P47	Extra Tipppers for 1100 Series Timers
TU40	Universal Multi-Voltage 24 Hour Electromechanical Timer
E101B	24 Hour Electronic Timer, SPST, 120-208-277V, 40 amps, Plastic Enclosure
E120B	24 Hour Electronic Timer, SPDT, 120-208-277V, 40 amps, Plastic Enclosure
W222	7 Day Electromechanical Timer, DPDT, 208-277V, 40 amps, Metal Enclosure
EW120B	7 Day Electronic Timer, SPDT, 120-208-277V, 40 amps, Plastic Enclosure

Tork® Sales Support

- Sell Sheets
- DYK
- Samples
- X-Ref spreadsheet
- Tracker

Attention HVAC Wholesalers!
Tork Timers now available exclusively from InvenSys Controls.

ELECTROMECHANICAL CONTROLS ACCESSORIES

CAT NO	UPC CODE	DESCRIPTION
PK100	PK110	Parts Kit includes parts cabinet and 24 P47, 5 P41, 28 P49, 10 P14, 4 1/8 lb motor, 2 2018 motor.
P-47	P5001	Pair Standard Screw On Type Triggers for 7100 Series (except 7100 model) and all 7300 and 1100 Series models. Does not include the mounting sheet.
824	P5026	Kit of 24 parts of P-47 Triggers.
PF48	P5003	Pair of standard triggers for 1100 FM Series.
P-49	P5002	Special ON trigger for 7300 Series to also activate dry venting wheel. Standard ON trigger included.
P-48	P5004	Screw-On Type Triggers available ON and OFF for use on all models with 40" dia. 7 day dial (except 8400 Series). Available only in packages of 7 parts.
P-49H	P5004	ON and OFF Triggers for 8400 Series. Available only in packages of 7 parts.
P-41	P5408	ON & OFF triggers for plug-in timer - Models 401, 401, 401.
P-14	P5006	Clipping screen for mounting into liquid tank of appropriate grade of dry venting wheel. Color: Black.
P-26	P5007	Selecter screws for 6800 (Double Bolt) Series - Provides Screw Operators Duty, Color: Copper.
8K500	P5007	for 1" condit. Bracing hangers for use with Royal endouse and metal condit. Fits P10-14 AWG ground wire. 3 hangers per kit.
8K750	P5008	for 1" condit. Bracing hangers for use with Royal endouse and metal condit. Fits P10-14 AWG ground wire. 3 hangers per kit.
64148	P5008	480/120v Step-down Transformer only for 480v power input. 7.8 VA for use with Model 7300, 8001, 8000 only.
21018	P5008	24/120V Step-up Transformer: 50VA.

Mounting Brackets for mounting unit less case. Specify model number, date of manufacture, and whether model mounts by snapping into case, or with screws.

MODEL NO: 4247
UPC CODE: 93200
All 24 hour models except 3 pole, including reserve power models



MODEL NO: 6490 (JK 7300)
UPC CODE: 93202
24 hour 3-pole for Models 7300, 7302.



MODEL NO: 64079
UPC CODE: 93201
for W 300E5 7 Day Models:
W100, W200, W300, W350, W320, W302.



MODEL NO: 62153-1
UPC CODE: 93202
W 300E5 7 Day 3-pole for Models W300, W302.



CAT NO	UPC CODE	DESCRIPTION
78159	93500	W Dial for 1800, 200, 104746 and R controls except W400A
78734-6	93501	24 hour dial for 7100 Series
72713-5	93502	24 hour dial for 1100 Series, 1847A Series
52825-17	93503	PM Series dial for 1100PM, 1100PM
64041	93504	8001 Dial
64041-1	93505	8002 Dial
64041-2	93506	8003 Dial
64041-6	93509	8001 Dial
64041-5	93508	8121 Dial
64041-4	93507	8001 Dial
72815	93505	MultiPole for 7014
73856-1	93501	MultiPole for 7014-26
90831-17	93507	Relay for 7400 Series
74240-2	93503	White Blank for 4500 Series
74240-1	93504	Ivory Blank for 4500 Series
74240-3	93505	Black Blank for 4500 Series
59765-1	93504	Micro-switch for 8001 and 8000 units
59201-36	93505	Micro-switch for 8007 units
73192-0	93500	Alphabet plate allows ON series to step into 7 Day (W Series) Time Switch Indicators



NSI Industries, LLC • USA • Phone: 800.321.5847 • www.nsindustries.com • www.tork.com

INVENSY

191 E. North Avenue
Carol Stream, Illinois 60130 USA
Customer Service Telephone 1.800.354.6163
Customer Service Facsimile 1.800.420.0804
www.CustomerService@invsys.com

For Tork Technical Service
Telephone 1.888.550.6508
Facsimile 1.800.561.4515
Technsupport@invsys.com

InvenSys™ is a trademark of InvenSys, Inc., its subsidiaries and/or affiliated companies. All other brands mentioned may be the trademarks of their respective owners.

www.invsys.com
www.invenyscontrols.com
©2010 InvenSys Controls
1810 - 190-1295

Training Opportunities www.Uni-Line.com

Click on Training link under Online Services

The screenshot shows the Uni-Line website interface. At the top, the Uni-Line logo is on the left, and navigation links for 'About Us', 'Careers', and 'Contact Us' are on the right. Below the logo is a navigation bar with 'Uni-Line Home', 'Products', 'Customer Support', and 'Online Services'. The 'Online Services' dropdown menu is open, showing options: 'Customer Toolbox', 'Product X-Reference Guide', 'Distributor Locator', 'Publication Zone', 'Training' (highlighted in red), 'Contractor ID Program', and 'Help Line'. A yellow arrow points from the 'Training' link to the 'Welcome to the Uni-Line Catalog' section. This section contains a welcome message and a link to 'cross reference guides'. To the right is a 'Robertshaw' thermostat advertisement with a family and a 'Run our Online demo today' button. At the bottom, there are three columns: 'Product Categories' (Wall Thermostats, Heating, Refrigeration, Cooking, Laundry, Time and Energy Controls), 'Customer Support' (Customer Service, Technical Service, Dealer Price Information), and 'Online Services' (Customer Toolbox, Product Cross Reference, Distributor Locator, Publication Zone, Contractor ID). A yellow arrow points from the 'Time and Energy Controls' category to the 'Advanced Search' button in the left sidebar.

UNI-LINE® About Us Careers Contact Us

Uni-Line Home Products Customer Support Online Services

Customer Toolbox
Product X-Reference Guide
Distributor Locator
Publication Zone
Training
Contractor ID Program
Help Line

Search Options
By Part or Keyword
Go
Categories
Wall Thermostats
Go
Advanced Search

Welcome to the Uni-Line Catalog

Access to Uni-Line® product data is easier than ever. Now you can quickly search for the information you need on HVAC, commercial refrigeration, appliance and thermostat products. Linked with literature, [cross reference guides](#) and [FAQ Knowledge Database](#), you'll see the Uni-Line difference with just a few clicks.

Robertshaw®
Simply the Right Choice in Thermostats

Try our thermostat before you buy it.
Run our Online demo today

Product Categories	Customer Support	Online Services
Wall Thermostats	Customer Service	Customer Toolbox
Heating	Technical Service	Product Cross Reference
Refrigeration	Dealer Price Information	Distributor Locator
Cooking		Publication Zone
Laundry		Contractor ID
Time and Energy Controls		

Uni-Line® Product Knowledge Training

UNI-LINE®

[About Us](#) [Careers](#) [Contact Us](#)

[Uni-Line Home](#)

[Products](#)

[Customer Support](#)

[Online Services](#)

Welcome !

Search Options

By Part # or Keyword

GO

Categories

Thermostats

GO

Advance Search

Training Tools

Look to Invensys Controls for your HVACR training needs. We offer Uni-Line® Product Knowledge regional courses, online webinars, installation videos and links to various training resources to help you stay ahead of the HVACR learning curve.



[REGISTER FOR CLASSES HERE!](#)

Training is available to provide you with value-added knowledge to differentiate the Robertshaw, Ranco, Paragon, Eliwell and Uni-Line brands. Review our class options regularly as new courses are added throughout the year.

- Click here for [North America Technician Excellence \(NATE\) Course Descriptions](#).
- Click here for [Training Schedules](#) both online webinars and regional courses in your area.
- Click here for [Biographies of Instructors](#).
- Click here for [Feedback Form](#).
- Click here for [NATE Signup Sheet](#).

PRESENTATIONS Click on a presentation to open

- COMMERCIAL REFRIGERATION Basics (NATE) - [Training_COMMERCIAL REFRIGERATION.pdf](#)
- HEATING - Gas Valves & Ignition Basics (NATE) - [Training_GAS VALVES.pdf](#)
- THERMOSTATS - Heating and Cooling Basics (NATE) - [Training_THERMOSTATS.pdf](#)
- ZONING & IAQ - Ventilation Basics (NATE) - [Training_ZONING & INDOOR AIR QUALITY.pdf](#)

[WEBINAR SESSIONS](#)

- Class Registration
- Course Descriptions
- NATE Presentations
- Webinar Presentations
- Installation Movies
- Other Related Links



Poll Question #2

- Which timer is a **universal multi-voltage 24-hour** timer?

A. 1101
B. TU40
C. W222

Contacts

For Tork® Technical Service

Telephone 1.888.500.4598

Fax 1.888.500.4599

TechSupport@NsiIndustries.com

Dan Neumann

Product Manager Commercial Refrigeration

Dan.Neumann@Invensys.com

Capitola Pontrelli

Marketing Communications Trainer

Capitola.Pontrelli@Invensys.com



NATE-Recognized



Training Provider



When You Have Uni-Line® Questions

Telephone:

Technical Service	1-800-445-8299
Technical Service Fax	1-630-260-7294
Customer Service	1-800-304-6563
Customer Service Fax	1-800-426-0804

Websites:

Uni-Line® Catalog: www.Uni-Line.com

Cross Reference: www.uni-line.com/modules/xref/xrefsearch.aspx

General Information for:

Robertshaw®, Paragon®, Eliwell™, Ranco®, and Publication Zone®

www.InvensysControls.com

www.RobertshawTstats.com

www.ToolBox.InvensysControls.com

Invensys®, Robertshaw®, Paragon®, Ranco®, Eliwell™, Uni-Line®, and Make the Connection™ are propriety marks of Invensys or its subsidiaries.
All third party trademarks and service marks are the propriety marks of their respective owners.

© 2010 Invensys Controls. All rights reserved.

